

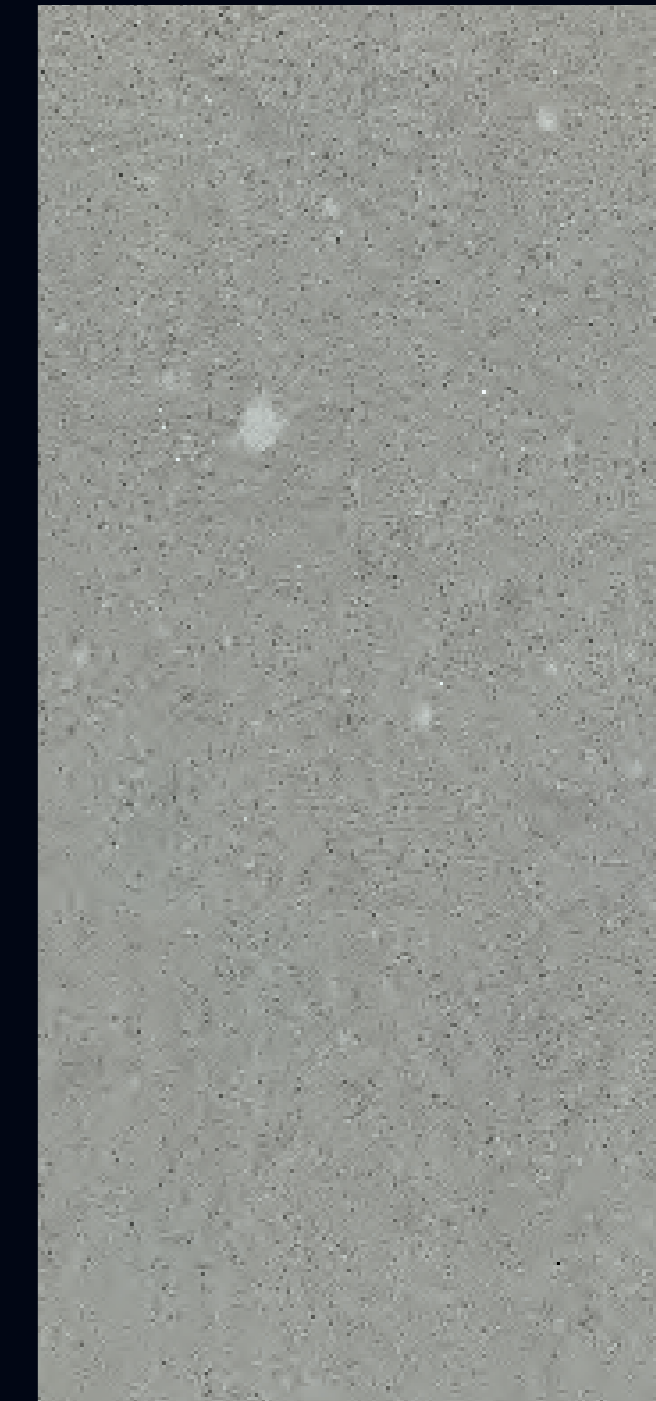
Meteore[®] INTONACO 10





METEORE 10

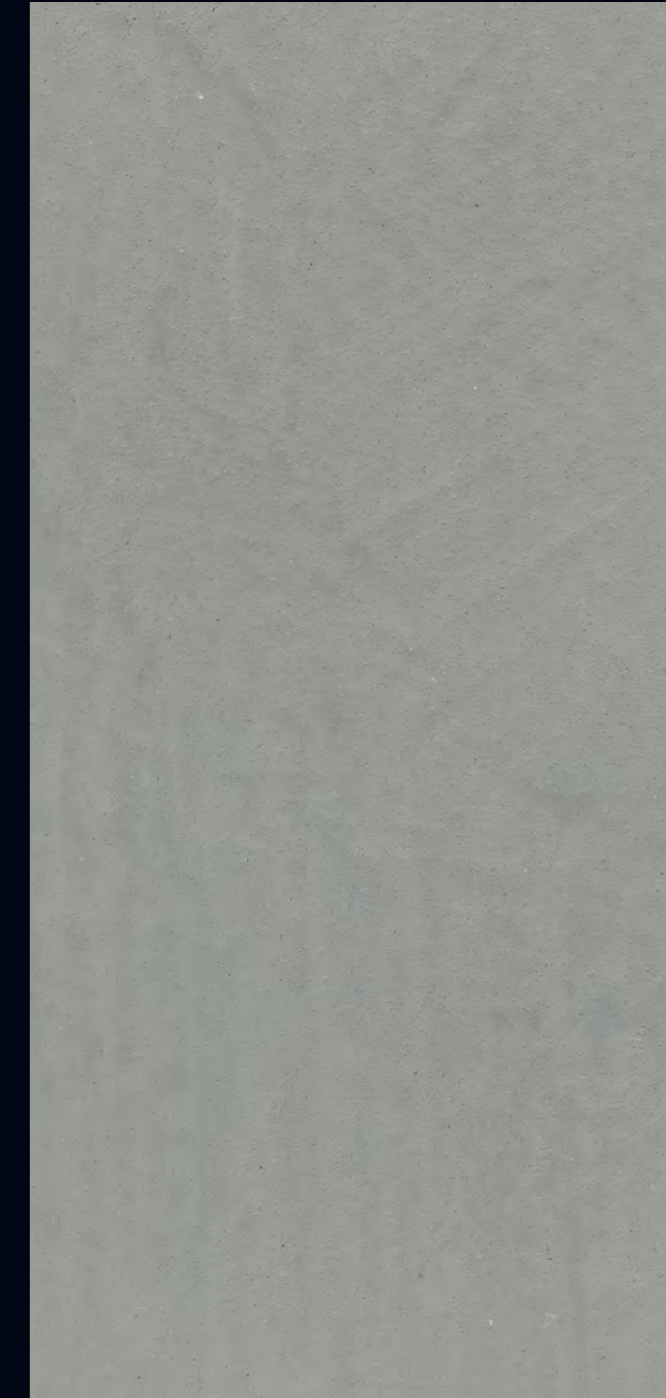
EFFETTO INTONACO SPATOLATO



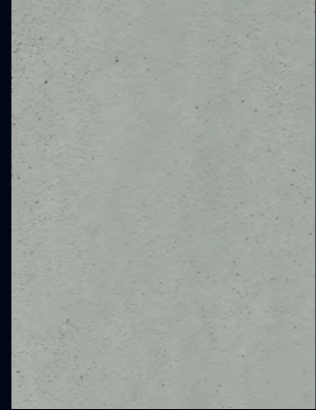
449 B + SCAGLIE NATURALI



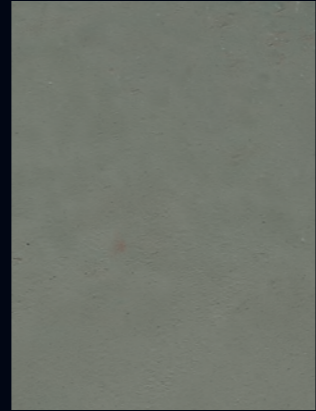
449 B



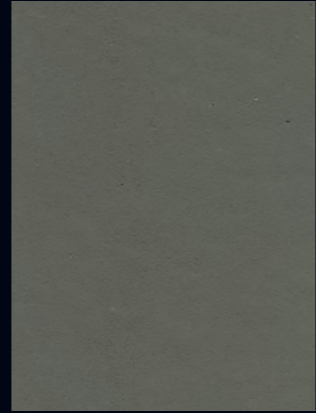
449 B



464 C



464 B



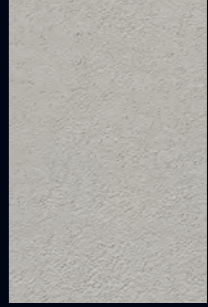
464 A

Piezas de color fotograficas meramente indicativas - Beispiel-Abbildung für Chips - Fotografia buchas coloridas para fins puramente indicativos

Uzorci boja su fotografije i - Φωτογραφικό δείγμα, ενδεικτική αποτύπωση - Образцы фотографий крошки ориентировочны



493 A



493 B



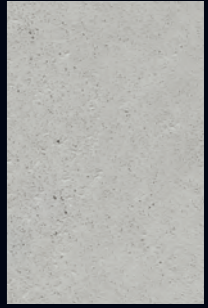
493 C



449 A



449 B



449 C



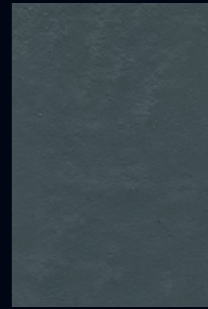
425 A



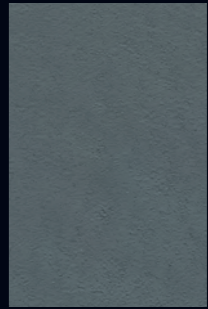
425 B



425 C



448 A



448 B



448 C



475 C



475 B



475 A



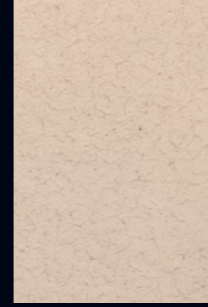
Rif. 475 C

Piezas de color fotograficas meramente indicativas - Beispiel-Abbildung für Chips - Fotografia buchas coloridas para fins puramente indicativos

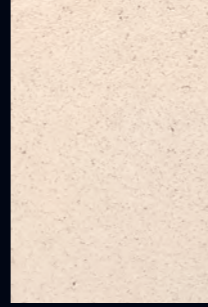
Uzorci boja su fotografije i - Φωτογραφικό δείγμα, ενδεικτική αποτύπωση - Образцы фотографий крошки ориентировочны



456 A



456 B



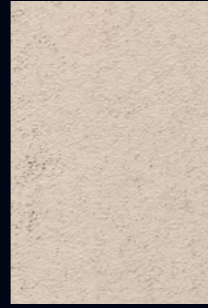
456 C



470 A



470 B



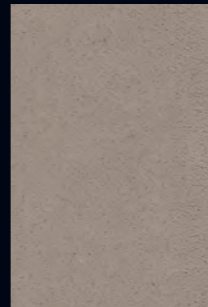
470 C



481 A



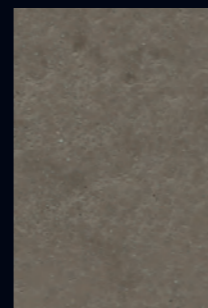
481 B



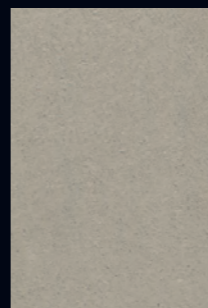
481 C



467 A



467 B



467 C



Rif. 456 B



Rif. 434 A



434 C



434 B



434 A

Piezas de color fotograficas meramente indicativas - Beispiel-Abbildung für Chips - Fotografia buchas coloridas para fins puramente indicativos

Uzorci boja su fotografije i - Φωτογραφικό δείγμα, ενδεικτική αποτύπωση - Образцы фотографий крошки ориентировочны



Rif. 469 C



489 A



489 B



489 C



435 A



435 B



435 C



484 A



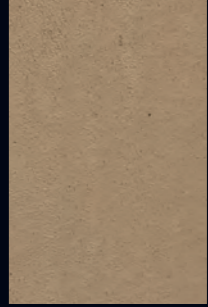
484 B



484 C



469 A



469 B



469 C



483 C



483 B



483 A



Rif. 483 B

Piezas de color fotograficas meramente indicativas - Beispiel-Abbildung für Chips - Fotografia buchas coloridas para fins puramente indicativos

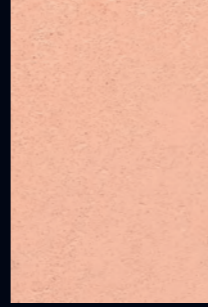
Uzorci boja su fotografije i - Φωτογραφικό δείγμα, ενδεικτική αποτύπωση - Образцы фотографий крошки ориентировочны



437 A



437 B



437 C



499 A



499 B



499 C



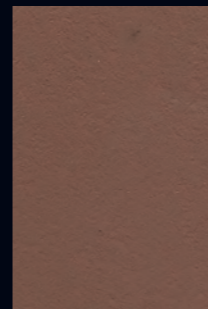
471 A



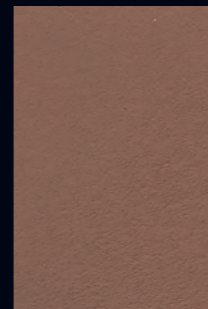
471 B



471 C



472 A



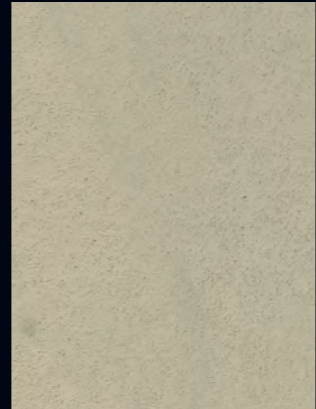
472 B



472 C



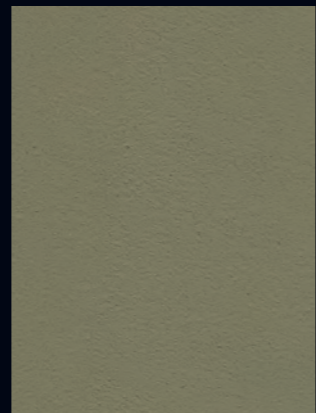
Rif. 472 C



466 C



466 B



466 A

Piezas de color fotograficas meramente indicativas - Beispiel-Abbildung für Chips - Fotografia buchas coloridas para fins puramente indicativos

Узорци боја су фотографички само показују - Φωτογραφικό δείγμα, ενδεικτική αποτύπωση - Образцы фотографий крошки ориентировочны



536 A



536 B



536 C



453 A



453 B



453 C



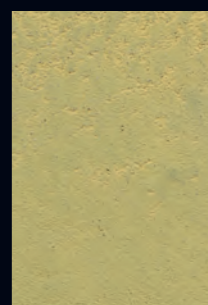
534 A



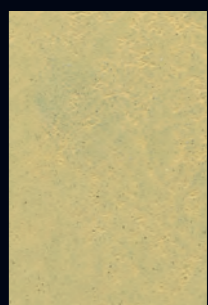
534 B



534 C



476 A





476 B





476 C

EFFETTO INTONACO SPATOLATO

PRIMER 1200









30%

4 h


METEORE 10

1 LT.

1,4-1,6 m²

8 h



EFFETTO INTONACO SPATOLATO CON SCAGLIE

PRIMER 1200






30%




4 h

METEORE 10 + ADDITIVO SCAGLIE NATURALI







1 LT.

1,4-1,6 m²

8 h



Il rivestimento materico naturale all'acqua per interno ed esterno, ideato per riprodurre l'effetto dell'intonaco in diverse varianti. La sua forte connotazione naturale, contribuisce a migliorarne anche la lavorabilità mentre i colori, particolarmente attuali ed uniformi, lo rendono un elemento d'arredo per spazi moderni ma allo stesso tempo ricercati.

CARATTERISTICHE:
Per ottenere i colori del catalogo occorre colorare il METEORE 10 con la relativa quantità di pasta colorante, denominata COLORI'. In alternativa si può colorare con il Sistema Tintometrico VALCLONE.
N.B.: Solo per le tonalità A e B, da realizzare ad Effetto Intonaco Spatolato o ad Effetto Intonaco Civile, si consiglia l'utilizzo dell'ADDENSANTE NH da aggiungere al METEORE 10 già colorato: LT. 0,060 per LT. 4 di METEORE 10 e LT. 0,180 per LT. 12.

L'ADDENSANTE NH rende il METEORE 10 più corposo, poiché le tonalità A o B richiedono l'utilizzo di quantità più importanti di colorante che tendono ad abbassare la viscosità del prodotto.
PREPARAZIONE DEL SUPPORTO.
Supporti nuovi: stuccare adeguatamente la superficie da trattare, dove necessario, con stucco idoneo. Ad essiccazione avvenuta, carteggiare ed applicare una mano di PRIMER 1200 diluito al 30% con acqua. Attendere 4 ore a 20°C prima di procedere con l'applicazione del METEORE 10.
Supporti vecchi: eliminare le vecchie pitture mal ancorate e lavare con saponi adeguati. Successivamente applicare, come fissativo, una mano di PRIMER 1200 diluito al 30% con acqua. Dopo 4 ore a 20°C, proseguire con l'applicazione del METEORE 10.

APPLICAZIONE DEL METEORE 10.
1) Effetto Intonaco Spatolato: Stendere due mani di METEORE 10 con Frattone Inox PV 43, mediante spatolate irregolari in tutte le direzioni. Attendere poi 8 ore a 20°C prima di applicare la seconda mano e, a prodotto ancora bagnato, spatolare la superficie con Frattone Inox sempre in maniera irregolare fino a raggiungere il livello di rifinitura desiderato.
2) Effetto Intonaco Spatolato con Scaglie: Per arricchire la superficie con frammenti naturali è possibile aggiungere al METEORE 10, già colorato e ben mescolato, l'ADDITIVO SCAGLIE NATURALI nelle seguenti quantità: LT. 0,040 per LT. 1 di METEORE 10 o LT. 0,160 per LT. 4 e LT. 0,480 per LT. 12 di METEORE 10.
3) Effetto Intonaco Civile: Applicare una mano di METEORE 10 con Frattone Inox PV 43, lasciando uno spessore di circa 2 mm di prodotto. Dopo aver coperto una superficie di 1 - 2 mq, ripassare il supporto, usando sempre il Frattone, e con tamponate vicine, le une alle altre, per ottenere un effetto buccia. Trascorsi 20 - 30 minuti a 20°C, cioè quando il METEORE 10 va in tensione, nebulizzare dell'acqua, con lo Spruzzino PV 106, per facilitare la lisciatura del supporto sempre con il Frattone Inox.
4) Effetto Intonaco Pennellato: Diluire il METEORE 10 con 320 ML di acqua ogni LT. 1. Applicare

poi due mani con Pennello PV 09 tramite passaggi irregolari ed in tutte le direzioni senza lasciare accumuli di prodotto. Attendere poi 8 ore a 20°C per stendere la seconda mano.

IMPORTANTE:
Quando il METEORE 10 è applicato all'esterno, occorre proteggere dalla pioggia la superficie decorata, nelle successive 72 ore dall'applicazione.
DATI TECNICI:
Resa: PRIMER 1200 circa LT. 1 per 10 - 15 mq una mano in base all'assorbimento del supporto. METEORE 10 circa LT. 1 per 1,4 - 1,6 mq (pari a 1,1 - 0,9 Kg/mq) due mani su supporti lisci per l'Effetto Intonaco Spatolato ed Intonaco Spatolato con Scaglie ed una mano per l'Effetto Intonaco Civile. Invece per l'Effetto Intonaco Pennellato la resa è di circa LT. 1 per 2,2 - 2,6 mq (pari a 0,7 - 0,6 Kg/mq) due mani sempre su supporti lisci.
Confezioni: PRIMER 1200 è disponibile in confezioni da LT. 1 - 2,5 - 5 - 12; METEORE 10 è fornito in confezioni da LT. 1 - 4 - 12; ADDITIVO SCAGLIE NATURALI è da LT. 0,040 - 0,160 - 0,480; ADDENSANTE NH è fornito nelle confezioni da LT. 0,060 - 0,180; COLORI' sono da ML. 80 e ML. 480.
Temperatura per applicazione: superiore a +10°C e inferiore a +30°C.
Essiccazione: indurisce completamente dopo 28 giorni in base alla temperatura dell'ambiente.


Resistenza: dopo il completo indurimento, si ottiene una pellicola traspirante con buona resistenza agli urti ed alla normale abrasione.
Pulizia attrezzi: con acqua e sapone.
Conservazione: in latta ben chiusa, anche dopo l'uso, a temperatura superiore a +10°C e inferiore a +30°C.
NORME PARTICOLARI DI SICUREZZA:
Evitare il contatto diretto con la pelle, proteggere gli occhi ed il viso, in caso di contatto, lavare immediatamente ed abbondantemente con acqua e consultare il medico. Le attrezzature non devono essere lavate in corsi d'acqua, scarichi, ecc.

AVVERTENZE PER L'UTILIZZATORE:
N.B.: Le informazioni fornite, che risultano dalle nostre esperienze, sono esatte ed accurate. Tuttavia, non essendo le condizioni d'impiego sotto il nostro controllo, non ci assumiamo alcuna responsabilità per i consigli ed i suggerimenti forniti. Si consiglia di eseguire il ciclo applicativo completo su una piccola superficie per verificarne la perfetta riuscita ed in particolar modo l'ancoraggio, la resistenza e l'aspetto finale. Proseguire poi con la decorazione, controllando costantemente gli effetti decorativi ottenuti, poiché il METEORE 10 è composto da prodotti naturali e resine speciali che reagiscono a seconda delle modalità di applicazione. Quindi ogni lavoro acquisterà la propria personalizzazione. Le tinte possono variare, rispetto al catalogo, dal 15% al 20%, come pure tra una partita ed un'altra. Nel caso in cui le partite siano differenti, terminare il lavoro in un angolo, quindi mescolare il materiale rimanente e quello nuovo in un contenitore grande prima di proseguire con l'applicazione.

N.B.: Prima dell'applicazione guardare attentamente il Video tutorial dell'Effetto specifico da realizzare. I colori riprodotti nel presente catalogo sono stati realizzati ad Effetto Intonaco Spatolato.

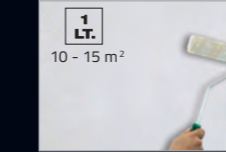
EFFETTO INTONACO CIVILE

PRIMER 1200





1 LT.

10 - 15 m²




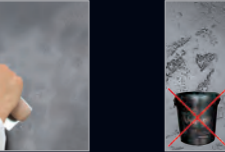



30%

4 h



METEORE 10

1 LT.


1,4-1,6 m²

20 - 30 min


EFFETTO INTONACO PENNELLATO

PRIMER 1200





1 LT.

10 - 15 m²




30%



4 h

METEORE 10



LT. 0,32 → LT. 1 METEORE 10
LT. 1,28 → LT. 4 METEORE 10
LT. 3,84 → LT. 12 METEORE 10



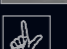
H₂O

1 LT.

2,2-2,6 m²

8 h

- METEORE 10 LT. 1**
- A** METEORE 10 (LT. 1) + COLORI' (80 ML.)
 - B** METEORE 10 (LT. 1) + COLORI' (40 ML.)
 - C** METEORE 10 (LT. 1) + COLORI' (10 ML.)

- METEORE 10 LT. 4**
- A** METEORE 10 (LT. 4) + COLORI' (320 ML.)
 - B** METEORE 10 (LT. 4) + COLORI' (160 ML.)
 - C** METEORE 10 (LT. 4) + COLORI' (40 ML.)
- METEORE 10 LT. 12**
- A** METEORE 10 (LT. 12) + COLORI' (960 ML.)
 - B** METEORE 10 (LT. 12) + COLORI' (480 ML.)
 - C** METEORE 10 (LT. 12) + COLORI' (120 ML.)

GB A natural water-based textured coating for interiors and exteriors, specifically formulated to recreate the plaster effect in several variants. It has a distinctly natural character that makes it more workable, and its colours - rather up-to-date and uniform - turn it into a furnishing element for modern yet refined spaces.

CHARACTERISTICS:
To obtain the colours displayed in the catalogue, you need to colour METEORE 10 with the relevant amount of COLORI' colouring paste. Alternatively, the VALCLONE Dispensing System may be used to achieve the desired colour.
N.B.: only for shades A and B, to be created with the Venetian Plaster Effect or with the Two-Coat Plaster Effect, we suggest using the THICKENER NH added to METEORE 10 already coloured: 0.060 l for 4 l of METEORE 10 and 0.180 l for 12 l.

The THICKENER NH makes METEORE 10 denser, as shades A and B require more substantial amounts of colourant, which tends to lower the product's viscosity.

SURFACE PREPARATION:
New surfaces: use a suitable filler to repair the surface where necessary. When dry, sand the surface and apply a coat of PRIMER 1200 diluted 30% with water. After 4 hours at 20°C, proceed with the application of METEORE 10.

Old surfaces: remove old peeling or chalking paint and wash using a suitable soap product. Next, apply a coat of PRIMER 1200 diluted 30% with water to act as a fixative. After 4 hours at 20°C, proceed with the application of METEORE 10.

APPLYING METEORE 10:
1) Venetian Plaster Effect: apply two coats of METEORE 10 using the PV 43 Stainless Steel Trowel with irregular strokes in all directions. Wait 8 hours at 20°C before applying the second coat and, with the product still wet, work the surface using the stainless steel trowel with irregular strokes until you achieve the desired level of finishing.
2) Venetian Plaster with Scales Effect: to enrich the surface with natural fragments, you can add the NATURAL SCALES ADDITIVE to METEORE 10, already coloured and well-mixed, in the following quantities: 0.040 l for 1 l of METEORE 10, or 0.160 l for 4 l and 0.480 l for 12 l of METEORE 10.
3) Two-Coat Plaster Effect: apply the first coat of METEORE 10 using the PV 43 Stainless Steel Trowel, applying irregular dabs roughly 10 - 20 cm long. After roughly 20 - 30 minutes at 20°C, namely when METEORE 10 starts to dry, apply the second coat a little thicker than the first coat, in the spaces left uncovered. Next, partially cover the METEORE 10 applied previously, creating only small empty spaces with irregular but jagged strokes of the desired size. Wait another 20 - 30 minutes at 20°C and spray some water using the PV 106 Sprayer, so as to easily smooth the support with the stainless steel trowel.

4) Brushed Plaster Effect: dilute METEORE 10 with 320 ml of water for 1 l. Apply two coats using the PV 09 Brush with irregular strokes in all directions, without leaving any excess product. Wait 8 hours at 20°C before applying the second coat.
IMPORTANT: When METEORE 10 is applied outdoor the decorated surface must be protected from the rain, in the following 72 hours from the application.

TECHNICAL DATA:
Coverage: PRIMER 1200: roughly 1 l for 10 - 15 m², one coat depending on the support's absorption; METEORE 10: roughly 1 l for 1.4 - 1.6 m² (equal to 1.1 - 0.9 kg/m²), two coats on smooth supports for all effects except for the Brushed

Plaster Effect, which requires roughly 1 l for 2.2 - 2.6 m² (equal to 0.7 - 0.6 kg/m²), two coats on smooth supports.
Packages: PRIMER 1200 is available in 1, 2.5, 5 and 12 l packages; METEORE 10 is supplied in 1, 4, and 12 l packages; NATURAL SCALES ADDITIVE comes in 0.040, 0.160, and 0.480 l packages; THICKENER NH is supplied in 0.060 and 0.180 l packages; COLORI' comes in 80 ml and 480 ml packages.

Application temperature: between +10°C and +30°C.
Drying: hardens completely after 28 days, depending on the ambient temperature.
Resistance: once the product has hardened completely, a breathable film develops, offering good resistance to knocks and normal abrasion.
Equipment cleaning: with soap and water.
Storage: make sure that the can is tightly closed, even after use, and store at a temperature between +10°C and +30°C.
SPECIAL SAFETY INSTRUCTIONS:
avoid direct contact with the skin. Protect the eyes and face. In the event of contact, rinse immediately and thoroughly with water and consult a doctor. The equipment must not be washed in watercourses, drains, etc.


USER PRECAUTIONS:
N.B.: the information provided herein is, to the best of our knowledge, correct and accurate. However, considering that the conditions in which the products are used are not under our control, we shall not be held liable for any recommendations or advice provided. We recommend testing a full application cycle on a small area to check the outcome, especially the product's adherence, strength and final effect. Subsequently, decorate the surface while constantly monitoring the decorative effects, since METEORE 10 is made with natural ingredients and special resins that react differently according to the method of application. Each application cycle will therefore acquire its own unique character. The shades can vary from those shown in the catalogue by 15% to 20%, and can also vary between different batches. When working with different batches, finish working in a corner and then mix the remaining product with that of the new batch in a large container before proceeding further.
N.B.: before applying the product, we recommend that you carefully watch the video tutorial for the effect you wish to obtain. The colours appearing in this catalogue are made with the Venetian Plaster Effect.

VALPAIN T S.p.A.

Via dell'Industria, 80 - 60020 POLVERIGI (AN) ITALY

Tel. +39 071 906383 (r.a.) - Fax +39 071 906384

www.valpaint.it - E-mail: info@valpaint.it

AZIENDA CERTIFICATA ISO 9001:2015 ED ISO 14001:2015 **VALPAIN T EXPORT S.A.**

Zone Industrielle Zaghuan 1100 ZAGHOUAN - TUNISIE

Tel. +216 71 940 134 / +216 72 681 051 Fax +216 71 940 138 / +216 72 681 071

E-mail: info@valpaint.tn

2° Stabilimento

43 Rue Des Entrepreneurs 2035 CHARGUIA 2 - TUNISIE

Tel. +216 71 940134 / +216 71 940136 Fax +216 71 940138

E-mail: info@valpaint.tn

VALPAIN T MAROC S.A.R.L

Rue Kaied El Achar, 7 20100 MAARIF CASABLANCA - MAROC

Tel. +212 5 22 25 10 24 Fax +212 5 22 23 19 65

E-mail: info@valpaint.ma

VALPAIN T ME DECORATION MATERIALS & PARTITIONS TRADING L.L.C.

Blue Bay Tower, Office 1314 - 1414

Al Abraj Street - Business Bay P.O. Box 191940 DUBAI - UAE

Tel. +971 4 366 1005 Fax +971 4 558 4380

E-mail: info@valpaintme.ae

VALPAIN T DESIGN D.O.O.

Dobrinjska do 27 71000 SARAJEVO - BOSNIA E HERZEGOVINA

Tel. +387 33 626134 Fax +387 33 761115

E-mail: valpaint@bih.net.ba

Altro Punto Vendita:

V Proleterske Brigade, 255 81000 PODGORICA - MONTENEGRO

Tel./Fax +382 20 656938

E-mail: info@valpaint-design.com

Altro Punto Vendita:

Medvedgradska, 5 10000 ZAGREB - CROATIA

Tel./Fax. +385 1 379 4918

E-mail: info@valpaint-design.hr

VALPAIN T ESPANA S.L.

C/Padre Arregui, 2 09007 BURGOS - ESPAÑA

Tel. +34 93 6382645 Fax +34 93 6382735

E-mail: info@valpaint.es

EN 13501-1

**FIREPROOF**

VALPAIN[®]



VIDEO